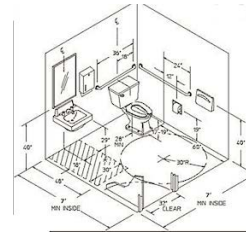


Model SBADA 7777 with Upgraded Features



ADA Compliant Lavatory Buildings

Model SBADA 7777 1" Walls

Interior Stall Dimension: 6'11" x 6'11" x 90"

Exterior Dimensions: 7' x 7' x 91"

Standard Specifications

Ceramic Fixtures – 9 Second Mixer Water Faucet – Mixer (with Hot Water option) – Electricity – Exhaust Fan – Safety Light – Smoke Detector – Paper Towel Dispenser – 9" Toilet Paper Dispenser – Foaming Hand Soap Dispenser - Laminate or Vinyl Flooring – Treated Wood Runners – Clothes Hooks – Inside Privacy Lock – Outside Keyed Door Lock – 1" Graffiti Resistant Walls – Light Switch for Safety Light and Exhaust Fan – Mirror – Wastebasket – Encapsulated Wall Edges - Consumables - 36" Door with Four Hinges – 2 Grab Bars – ADA Toilet Seat – Paddle Handled Door Handle – Paddle Handled Water Faucets – ADA Sink and Grid - Dual Safety Mirrors – Removeable Wood Base For Ease of Shipping



Options:

Baseboard Heater - Tankless Water Heater – Waterless Urinal – Automatic Hand Dryer - Aluminum Runners - Motion Sensor Light Switch - Water Pressure Pump – Water or Waste Holding Tank – Air Conditioning – Aluminum Base - Upgraded Electrical Service

Comfort Station Upgrades

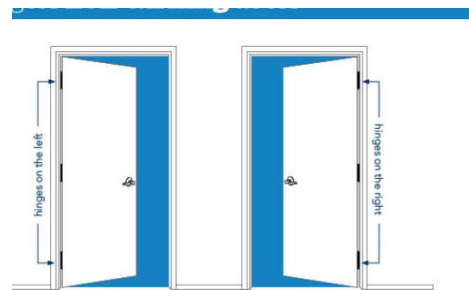
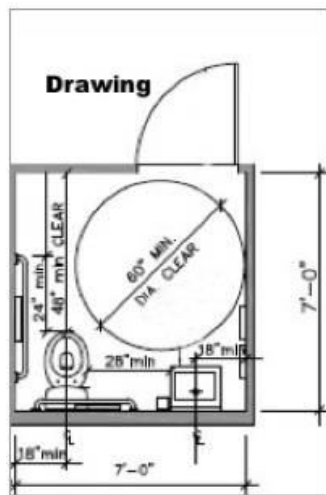


Touch-less Toilet Cistern – Touch-less Faucet – Touch-less Foaming Soap Dispenser – Door Handle Indicator – Encapsulated Exhaust Fan – Heated Water Hose – Connector Hot Box – Encapsulated Water and Waste Tanks – Unique Comfort Station Fixtures

ADA Compliant Lavatory Building

Exterior Plumbing upgrade Not Shown

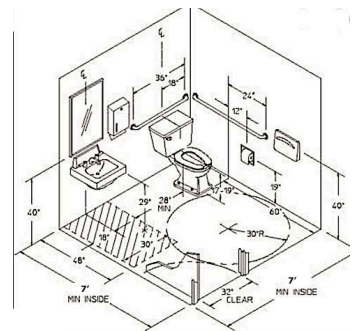
Door Orientation is Optional and Requires Advanced Notice.
Doors are assumed to be left hand doors unless otherwise ordered.



LEFT HAND DOOR

RIGHT HAND DOOR

- Hinges located on the left
- Lever pointed left, to hinges
- Pair with left handed levers
- Hinges located on the right
- Lever pointed right, to hinges
- Pair with right handed levers



4" Steel Non-Removable Frame Upgrade

TOILETS.COM INC. FEATURING PORTA JOHN® BRAND PRODUCTS PH. 800-521-6310 (US)
PH. 1-586-739-4611 (INT'L) E-MAIL: INFO@TOILETS.COM™ WEB PAGE: WWW.TOILETS.COM™